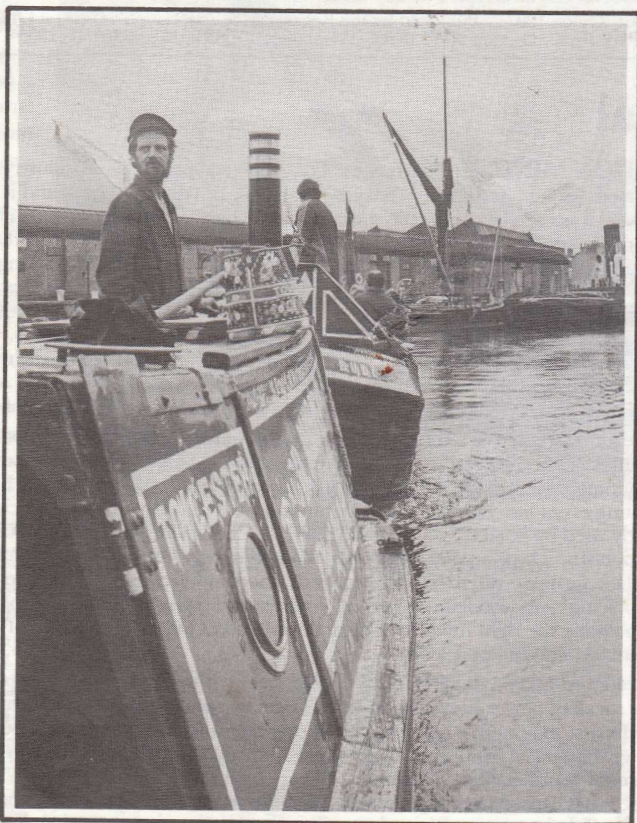


# WINDLASS



**SOUTH EAST REGION  
INLAND WATERWAYS ASSOCIATION**



*Photo—  
R. H. Perks*

**'Golden Oldies'—Limehouse Basin—Tam Murrell taking the narrowboats  
Towcester and Bude into Limehouse Cut, en-route to the 1980 National**

**March 1987**

**Number 180**

# windlass

JOURNAL OF THE SOUTH EAST REGION



Inland Waterways  
Association

Editor: Richard Hugh Perks

Patron: Dame Margot Fonteyn  
Chairman: David Moore,  
12 Rectory Rd, Stanford-le-Hope,  
Essex Tel: Stanford-le-Hope 677729  
Secretary: Mike Stimpson, 109a High Street,  
Rickmansworth, Herts. Tel: 0923-7-70425

Region President: Illyd Harrington  
Treasurer: Brian Freshney, 68 Lansdowne Road,  
Stanmore, Middlesex HA7 2SA Tel: 01-954 4580  
SE Region Inland Shipping Committee Chairman:  
Alan Brown, Wellesley, Station Approach, Chorley  
Wood, Herts WD3 5NE. Tel: 01-260 3516

The IWA may not agree with opinions expressed in this magazine but encourages publication as a matter of interest. Nothing printed may be construed as policy or an official announcement unless so stated, otherwise the Association accepts no liability for any matter in the magazine. Although every care is taken with advertising, no responsibility whatsoever can be accepted for any matter advertised.

© IWA South East Region 1987. Published by the Region at the Association's General Office,  
114 Regent's Park Road, London NW1 8UG. Telephone: 01-586 2510 and 01-586 2556

## Editorial

**CONSERVATION MINDED**—During the last few years a whole new industry has grown-up, that of telling people what to do. It is a persuasive machine, heavily sponsored and it will not take 'no' for an answer. It is called *Protectionism*, it trades on the back of the more familiar name of conservation and it is knocking on our door. In the past, if something was preserved and rescued the term conservation was applied. IWA has been in the conservation business for a long while, saving for public use and enjoyment several thousand miles of waterway, historic structures and tens of thousands of acres of adjacent lands. An impressive track record. The essential words here are saving for public use and enjoyment. Because of our campaigning, boaters, anglers, walkers and naturalists can enjoy our waterways. The objectives of protectionism are not so clearly spelled-out, and hardly surprising, because protectionism is exactly what it says, the saving and sometimes appropriation of land and water for the exclusive use of some and to the exclusion of others.

Waterways have already come under the threat of protectionism, as we have seen on the Yorkshire Derwent, the Suffolk/Essex Stour, the Norfolk Broads and the Thames Estuary, and with it has come a proliferation of bye-laws, fences and keep-out notices. An organisation which had a stand at one Branch boating event last year has given a grant towards the purchase and fencing-off of a piece of marsh formerly used by boaters, walkers and anglers. And we are not the only bodies facing the effects of protectionism: The National Trust was attacked in a recent radio programme over its land conservation policy, farmers with excellent records of woodland preservation have to fight to coppice chestnut (no coppicing—no woodland carpet of bluebells and orchids), and canal societies are being told-off for not planting the right mixture of wild flower seed. This is not my kind of conservation if birds are more important than people.

The many protectionist bodies, angling, nature, wildlife and bird conservation, employ loquacious language. They speak of power boats not powered boats, suggesting to the public that waterway users have speedboats; they couple boating with injury to swans, but do not point out that many IWA Branches give financial support to swan rescue services; they tell of damage to the environment by pollution of petrol engines, when almost every boat uses diesel. It has been said before that pollution is more often caused from the exhausts of nature enthusiasts, parked by the 'Cut', who are too lazy to switch-off their engines. But a cheap, ill-informed jibe gets a good headline in print.

Conservation is a band-wagon onto which anyone can jump, and waterways are an easy subject for which to take the credit. By constant propaganda the public can be led into believing that protectionism is the true road. After 40 years of dealing with the real issues, such as persuading people not to throw their rubbish into the 'Cut', it is annoying to have to battle to re-ensure use and enjoyment of waterways for all.

# INFORMATION REQUIRED

Members of the Surrey and Hants Canal Society were recently fortunate to recover for preservation an old manually operated wharf crane. It was sited on the bank of the canal at Lower Heyford, and was dismantled and re-erected at a lock site on the Basingstoke Canal.

Unfortunately when the crane came into our ownership the entire slewing mechanism was missing. The Society are very keen to complete restoration of the crane by fitting a new mechanism made to the original design. This would be quite possible if we could have access to a similar crane for taking photographs and making measurements for the manufacture of new parts.

The crane construction mainly comprises castings, therefore it is reasonable to assume that several were made using the same foundry patterns. We would be glad of help to trace one of these still existing. There is nothing about the design which makes it special to a canal wharf, so it could well be that there were specimens in railway yards or any site where a small static crane could be of use.

We would appreciate any information from anyone who might know of a sample still existing and made to the same design. The photograph shows our crane, re-built on the banks of the canal.



Please contact:  
S. H. Meller,  
Special Projects  
Manager, Surrey  
and Hants Canal  
Society.

---

## WINDLASS DATES FOR 1987

Issue 181, Copy by 9 June.

Distribution, 24 July.

Issue 182, Copy by 20 October.

Distribution, 4 December.

## WINDLASS ADVERTISING

Advertisements to be prepaid. Cheques to 'IWA', please to reach the Editor by deadline date.

**Classified:** £1.50 for 15 words. 8p per word thereafter. **Full page** £50, **½ page** £26, **¼ page** £17.50, **⅛ page** £13.50, **¼ page** £7.

**Distribution.** Branch Secretaries can obtain additional copies of 'Windlass' from Dennis Cozens, 260 Boundary Road, Wood Green, N22. Telephone: 01-888 4646.

Will publicity officers and regular contributors note that copy dates are the very last dates on which copy can be accepted for inclusion, as in the past late copy has resulted in inconvenient delays to publication.

All contributions to be sent to The Editor, Richard Hugh Perks, Weald Cottage, Eastling, Faversham, Kent ME12 0BA  
Tel: Home (079589) 603;  
Office (0227) 470620.

**Changes of address** should be reported to Head Office and not to the Editor.

---

# National Steam and Small Boat Festival

British Waterways Leisure, part of BWB, is to sponsor the Association's national trailboat rally on the Basingstoke Canal at Frimley Lodge Park, 13-14 June 1987.

Other sponsors include Surrey County Council, part owner of the waterway, Surrey Heath Borough Council responsible for developing the 50 acre park, part of which will be the Festival site; Johnson Wax whose Frimley headquarters are nearby; the Steam Boat Association of Great Britain and the Surrey and Hampshire Canal Society whose aim is to complete restoration of the 32 mile canal in two years time.

Initial entries indicate that the organisers can expect 100 or more boats to attend. A strong contingent of Victorian steam powered launches and canoes will be a big attraction. A number of traditional Thames rowing skiffs are also expected, and it is hoped that the Canadian Canoe Club will also organise an event. In addition, owners of modern trailable boats are encouraged to make this the most successful event of its kind yet.

Frimley Lodge Park and the tree-lined rural environment of the canal makes an ideal setting for a water festival. There is a large informal recreational area which will be set aside for camping and caravans. In addition to pitches for cricket, hockey, football and a pitch and putt course, a keep-fit trim trail has been laid out with 28 different exercise points which will be available for use.

An extensive trade show and exhibition is being planned for the festival and a varied programme of entertainment on and off the water for all the family.

Festival Bar-B-Q on 13 June. Tickets, £3.50, made out to 'FRIMLEY '87' from Mrs R. Millett, 14 Dinorben Close, Fleet, Hants GU13 9SW. Further information from Dieter Jebens, Press Officer, Farnham (0252) 715230.

## Basingstoke Canal Boat Gathering

Owners of non-trailable boats and hire boats are being encouraged to join in the IWA's National Steam and Small Boat Festival, being held on the Basingstoke Canal at Frimley Lodge Park, 13-14 June 1987.

Because the bottom end of the waterway has not yet been restored, a special gathering of boats is being organised on the 880 yard length of the canal from the River Wey Navigation junction to Lock 1. This stretch of the canal was dredged to a fully navigable depth last year.

The 'Lock 1 Gathering' will be the first organised event of its kind on the canal since 1968 when boats cruised up to the first lock to campaign for the canal's restoration. This year's event will be organised to rally standards with an appointed harbourmaster. Entry forms are available from: Adrian Birtles, 58a High Street, Twyford, Berks.

Road transport to and from the Festival will be provided by the organisers.

Commenting on the decision to involve owners of larger canal craft, the Festival Director, Tony Davis, said. 'The gathering of boats below Lock 1 will be the first of its kind for nearly 20 years. This time it will not be a protest cruise but the publicity value will be just as important to spotlight the aim to complete restoration of the Basingstoke in 1988. We hope a good number of boats will participate and join in the Festival.'

For further information, contact: Dieter Jebens, Press Officer, Farnham (0252) 715230.

## Guildford Water Festival—11-12 July 1987

This event, organised by the Guildford and Reading Branch of IWA, will again play an important part in the Guildford Festival and will also mark the centenary of Harry Stevens (1887-1970) who gave the River Wey to the National Trust in the 1960's.

Over the weekend at Millmead (opposite the Jolly Farmer) there will be a gathering of boats and the usual full programme of waterside entertainment for all the family, including boat trips, bar and music, craft stalls and local waterway societies' displays and sales stands.

Boat entry fee is £3 plus a charge for the commemorative plaque if required. For boat entry forms, write (enclosing SAE) to Mrs. P. Perry-Barton, Segren, Grove Road, Beacon Hill, Hindhead, Surrey GU26 6PH. Telephone Hindhead (042873) 6496. For further information contact Dick Harper-White, 25 Jubilee Crescent, Addlestone, Surrey. Tel: Weybridge (0932) 42074.

# HIGHLIGHTS

## Waterway Events in the South-East Region

- 18 APRIL** **BISHOP'S STORTFORD**—River Rally on the Stort, Penny Fair and Transport Rally. Details: David Read, (0279) 504095.
- 2-4 MAY** **LITTLE VENICE**—Canalway Cavalcade—London Branch. Pageant of Boats on the Saturday; Illuminated Boats on Sunday evening. Boat entries: contact Ann Hancox, 01-640 1446. Enquiries to Marion Waters (office) 01-626 8331 ext 30.
- 10 MAY** **RIVER ARUN**—Solent and Arun—Arun Sponsored Cruise to Pallingham. Details: Ray Peirce.
- 17 MAY** **WALKING FROM WOKING TO FLEET**—Sponsored Tow Path Walk—Surrey and Hants Canal Society. Details: Graham Meade, 89 Tavistock Road, Fleet.
- 23 MAY** **LEEDS**—Trans Pennine Canal Marathon—BWB 127 mile canoe race along the Leeds and Liverpool Canal. Details from BWB.
- 7 JUNE** **CHELMSFORD BRANCH IWALK**—Sponsored walk along Chelmer and Blackwater Navigation. Details: John Gale, 12 Wakefield Road, Billericay.
- 7 JUNE** **HORSHAM 'HEADWATERS OF THE ARUN'**—PODDLE, Wey and Arun Canal Trust's Sponsored walk 15 miles. Details: David and Lyn Ball, Storrington 5144.
- 13-14 JUNE** **BASINGSTOKE CANAL**—IWA National Steam and Small Boat Rally. Frimley Lodge Park. Details: Dieter Jebens, (0252) 715230
- and **LOCK 1 GATHERING**—for larger boats and hire boats along newly opened half mile length of the Canal from River Wey.
- 11 JULY** **CHICHESTER ARM, PORTSMOUTH AND ARUNDEL CANAL** Annual Barrel Race, Chichester Canal Society. Ring John Cooper, Chichester 671051.
- 11-12 JULY** **GUILDFORD WATER FESTIVAL** Millmead, Guildford and Reading Branch. Contact: Dick Harper-White, 25 Jubilee Crescent, Addlestone. Weybridge 42074.
- 28 JUNE** **BLACK COUNTRY MUSEUM VISIT**—Herts Branch. Details: Phil Orton, (0923) 670267.
- 26 JULY** **RIVER ADUR**—Sponsored Cruise—Solent and Arun Branch. Details from Ray Peirce.
- 15 AUGUST** **FAVERSHAM**—Thames Barge and Smack Race with classes for Historic Power Craft, Dutch Barges and Old Gaffers, Crack of dawn start. Details from Editor of *Windlass*.
- mid **SEPTEMBER** **CASSIOBURY PARK**—Gathering of Boats to celebrate 190 years of the opening of the Grand Junction Canal. Details later.
- 19-20 SEPTEMBER** **EAST LONDON**—London Branch—Campaign Rally. All Branches and Canal Societies welcome.

---

## SURREY AND HANTS CANAL SOCIETY

### 1987 SPONSORED TOW PATH WALK

This year's walk will be on Sunday 17 May, starting at 10am from any marshal point, and walking from Woking to Fleet or vice-versa.

The Society will again be extending an invitation to other organisations, schools and clubs to join us on the day and share the proceeds on a 50/50 basis.

Details of the walk and sponsor forms are available from Graham Meade, 89 Tavistock Road, Fleet, Hants. Telephone Fleet 629466.

# BACKCHAT—by the Editor

**NATIONAL RALLY GIFT**—Brentford Rally Director, David Moore, has presented the Wey and Arun Canal Trust with the temporary bridge which was erected over the Grand Union Canal for the Brentford National. The Trust intends to use the bridge initially as a temporary access across Lee Farm, Middle Lock. The Trust appears to have had fun recovering the bridge from the Rally site. It involved an ex-GUCC working boat now owned by members of London WRG; several BWB maintenance men and a lorry owned by the Wilky Group of Guildford.

**THE NOT SO OLD PIONEER**—I received a sizzling letter from John Gagg (the postman who delivered it was wearing the modern equivalent of asbestos gloves) for daring to wish John a happy retirement, in the last issue of *Windlass*. John wishes to point out that he is only retiring from the Council of IWA and that he is not retiring from anything else. In fact, he is busily embarking on a new project, a scheme for introducing young people to the waterways, for which we wish him all success. John has already been in touch with Branches and Societies asking for their assistance, and I hope members will give him their help.

**WATERSIDE CHURCHES**—Several years ago I wrote a series of articles about churches connected with the waterside which were published as *Mariners Churches*. About 15 years ago Marjorie Bates persuaded me to turn the subject into a book, and now the first volume is ready to be written up. During my researches several people have written to me about canal/riverside churches and I am considering preparing a separate volume on *Waterside Churches of London and the South East*. Many of London's late Georgian and Victorian churches were built of stock bricks from Kent and Essex which were brought up by canal. Smeed Dean at Murston provided the bricks for Westminster Cathedral, while the opening of the Regent's and the Paddington section of the Grand Union brought materials for the building of many other churches. Boats and barges were often used for funerals; writing in the current issue of the *Basingstoke Canal News*, R. Starks recalls swinging a bridge on the Basingstoke for a funeral barge which was being drawn down the canal by hand. I would be interested in hearing from *Windlass* readers who might be able to assist me with further information, particularly about funerals of canal folk.

**BOOKS BY MEMBERS**—*Windlass* is always pleased to review and mention books written by IWA members in the SE Region. Some of our members are quite prolific writers on a variety of subjects, but their books do not always seem to be available through IWA Sales. I was recently sent a book for review, in another publication, by an author who I found out had been a member of IWA for many years. It would be useful to know who had written what. If authors will write to me I will prepare a bibliography of books, in or out of print.

**HISTORIC BOATS**—In the same vein, it might be useful to compile a register of historic boats owned by SE Region members, for publication in *Windlass*. Classifications could also include details of early engines (hot bulb and steam). As a topic, may I suggest categories for ex-working boats, divided into narrowboats and wideboats; tideway and estuarial boats; steamers; vintage pleasure boats; and non-powered craft. There might be a separate section for craft undergoing restoration. It is possible that various organisations with which IWA has a close connection, maintains such registers, on the other hand there are probably many smaller craft which may have escaped the net. Of particular interest might be historic rowing skiffs and watermens' boats, ex-working platforms and lighters. (I can already hear a loud groan from the Amstrad Computer in Twickenham).

**SPEED RESTRICTIONS**—In spite of all the *Watch Your Wash* campaigns, boaters of the less desirable breed insist on putting their foot down whenever they think they can. Walking the bank of the Upper Medway Navigation just before Christmas was an education. I saw several high-powered craft cruise gently up to a bend, and when they thought they were out of sight of anyone, absolutely belted through the reach. There was nearly a nasty accident at Tovil when a speedboat just managed to avoid a rowing boat. A report from the 'Boat Show' suggests that newcomers were being encouraged onto inland waterways by promises of new types of hire-boats which offered all sorts of comforts, including generators to power micro-wave ovens. No experience is necessary, they all stress. I happen to think it is, and believe that every first-time boater should be made to go on a pre-boating course which the hire-boat firms could organise, rather than the optional half hour instruction on the Sunday (if only to learn how the micro-wave operates). On the subject of speed limits, BWB proudly announces that last year's top canoe team in the Trans-Pennine Canal Marathon completed the 127 mile course in 18 hours 45 minutes and 42 seconds (about 6¾ mph)!

**TELEVISION ADVERTISING**—Kent and East Sussex Branch managed to get a branch advertisement on TVS. It produced 28 replies, including one from France. The Committee was brought up ‘all standing’ when one person wrote to say he had heard there were canals in the South East where he could catch salmon and trout and could the Branch Secretary tell him where to go. He did.

**COVER PICTURE**—‘Golden Oldies’—What Limehouse Basin could look like, with four different types of historic craft in the photograph (you can just see the bow of the wideboat, right). Was it only in 1980? The future of Limehouse Basin is still being discussed, but there are suggestions being whispered that the proposed development might be able to save the waterspace, after all. Sir Leslie Young, please take note. The sailing barge in the background is *May* built at Harwich in 1891. She sailed round from Ipswich bearing a group of IWA members from Ipswich together with a small cargo for IWA funds. The trip round from Ipswich caused no problems, they are used to salt water there. The passengers and their cargo were taken aboard the Murrell’s *Towcester* and *Bude* for the trip up to the Rally Site, but the low bridges of the Lee soon began to cause anxiety and it was ‘paper bag’ weather.

No particular reason for this photograph, other than to remind people that it is the historic ex-working craft which provide the colour for our waterways.

---

## LEA AND STORT DEVELOPMENT COMMITTEE

The annual awards of the Lea and Stort Development Committee were made on Tuesday 11 November at the Memorial Hall, Sawbridgeworth.

The awards are made to local authority, commercial and voluntary organisations and individuals who have completed some project adjacent to the rivers.

Awards this year were made as follows: **Local Authority:** shared between East Herts and the London Borough of Hackney for their continued work on the Hartham at Hertford and Springfield Park, Hackney. **Commercial:** Pinecraven for improvements to commercial riverside property at Bishop Stortford. **Club:** Bishop Stortford Civic Society for the restoration of a crane.

**Individual:** Mr Stonehouse of Hertford Lock. **Highly Commended Certificates** were presented to the Harlow Outdoor Pursuit Centre, Enfield Lock Conservation Group and Mr Young of the Rifles public house, Enfield Lock.

---

## Wey and Arun Canal Trust—The Poddle

The Poddle is our annual fund raising event which takes the form of a sponsored walk. This year the venue is a new one for us, being based on Horsham, and consisting of a circular route of approximately 15 miles, taking in a considerable part of St Leonards Forest. Although not including any towpath walking this year, the area is of relevance to us in that it includes the source of the River Arun, so we are sub-titling the walk ‘The Headwaters of the Arun’. If that sounds like a Wallace Arnold coach tour, I’m sorry, coaches are not provided—the motive power is definitely self-propulsion, but some of the other facilities are provided!

The accommodation at the start and finish is in a first-class recreation centre with en-suite toilets and showers. Covered car parking space is provided free of charge within easy walking distance. Lunch will be taken at our ‘restaurant’ at Plummer Plain where full bar facilities will also be available. Our ‘Cordon Bleu’ cook and her catering staff are well qualified in the art of making cheese rolls, and will leave no stone unturned to ensure that they find enough food to provide all participants with a meal to be remembered.

Members of the ‘tour’ will also be able to make frequent stops at ‘spas’ en route, where sparkling water, perhaps flavoured with a little juice of orange or lemon, will be freely available, served by our courteous staff in plastic cups.

Further culinary delights (ie, left-overs) will be available at the completion of the tour, where members will again be invited to make use of the facilities.

The tour takes place on Sunday 7 June 1987 and is a whole-day event, in which anyone is invited to take part. And the cost of all this—absolutely nothing, so long as you have got yourself well sponsored in aid of the Trust’s restoration fund. If you are not able to get yourself sponsored for any reason, you are not excluded. You will still be able to share in the fun by making a donation instead (minimum £2, to cover expenses).

Please make your booking now to avoid disappointment. Enquiries, and offers of help, to David and Lyn Ball, Storrington 5144.

## ELEVENTH SEASON OF GUIDED WALKS ALONG THE REGENT'S CANAL

During the first decade of these walks Dr Michael Essex-Lopresti held 109 walks, accompanied by 2,807 people whose contributions to the IWA totalled about £1,450. All money donated—with the exception of the cost of printing the leaflets—went to the Association; the guides give their services free and do not even claim out-of-pocket expenses.

An additional feature was introduced last year and will continue in 1987. Walkers wishing to return to Camden find it more difficult by public transport from Paddington than they do from Islington; accordingly the London Waterbus Company has kindly offered walkers a discount on the zoo bus from Little Venice to Camden after each walk. This year's programme of walks follows. Meet at Camden Town Underground Station.

Walking to Islington, past St. Pancras and Islington Tunnel and ending near Angel underground station, starting at 2.30pm on Sundays 5 April, 7 June, 2 August, 4 October, and at 6.15pm on Tuesday 16 June, and 18 August.

Walking to Paddington, past the zoo and Maida Hill Tunnel, and ending near Warwick Avenue underground station, starting at 2.30pm on Sundays 3 May, 5 July, 6 September, 1 November and at 6.15pm on Tuesday 14 July.

Each walk lasts about 2 hours and walkers contribute £1.50 for IWA funds.

---

## GREATER LONDON INDUSTRIAL ARCHAEOLOGY SOCIETY (GLIAS)

**Industrial Archaeology Walks in London:**

**No. 6: Regent's Canal—Little Venice to Camden**

**No. 7: Regent's Canal—Camden to King's Cross**

*Published by the Greater London Industrial Archaeology Society.*

Together, these Walks, which start and finish at tube stations, cover some five miles. They mainly follow the Regent's Canal towpath from Little Venice (near Paddington), via Camden Lock, to York Way (King's Cross), but also divert from the towpath to include buildings near the canal. Thus, as well as many canal features, such as bridges, locks and basin sites, etc.; the Walks include other things of interest—railway buildings, workshops, stables, ornate gasometers, a beautiful stretch through Regent's Park, and even a 'folly' pub built in the wrong place.

**No. 8: Battlebridge Basin, King's Cross**

This new GLIAS Walk explores an inner city area with much of interest. The main feature, a substantial canal basin completely invisible from surrounding streets, is enclosed by a variety of buildings such as warehouses, stores, an ice importer's and jam factory—which depended on the canal for transport. The Walk includes a section of towpath leading up to Islington Tunnel, the poppy warehouse and an informative trail through back streets. It is 1½ miles long, starting and finishing at King's Cross station.

GLIAS Walks cost 10p each plus 20p post and packing per order, cheques payable to GLIAS. Bulk discount available. Copies, and information on GLIAS, can be obtained from Tom Smith at 74 Lord Warwick Street, London SE18.

Membership details of GLIAS available from Sue Hayton, 31 The High Street, Farnborough Village, Orpington, Kent BR6 7BQ.

# BRANCH NEWS AND NOTES

## **KENT AND EAST SUSSEX BRANCH—Report by David Strivens**

*Chairman: Ian Dempster, 16 Dixwell Close, Gillingham, Kent. Telephone: 0634 35627*

*Secretary: John Morgan, 49 Hillbrow Road, Ashford, Kent. Telephone: 27594*

### **BRANCH REPORT**

In November we returned to a venue we last used five years ago, the Kent Arms in Ashford. A talk by John Collard on maritime Rye broke new but very relevant ground and was well supported, including some strange faces, a desperately needed sight.

In early December we held our regular Christmas Social at the Imperial at Southborough. Alas, attendance was confined to the Committee, plus one active and closely connected member and a few relatives. It was a very pleasant evening with catering co-ordinated by Jean Twyman, but we would have liked to have seen you and we are wondering what to do next time.

This brings me to the perennial subject of committee membership, which is looking somewhat jaded of late. This year we are to hold the AGM at, wait for it, HASTINGS. We hope by choosing this venue to see some new faces from East Sussex and what is more, lure one or two of them onto the Committee. Remember, your Chairman needs you!

### **BRANCH MEETINGS AND EVENTS**

**25 MARCH.** An illustrated talk, 'Reminiscences of My Life Afloat' by William Attenborough. This will be preceded by the AGM. A wider range of refreshments than usual will be available. Venue is The Langham, Elphinstone Road, Hastings. 8pm.

**25 APRIL.** Branch Annual Dinner. Always a good evening out. Venue is Poul Wood Leisure Centre on the Eastern outskirts of Tonbridge. The catering is locally regarded as excellent. Bookings. £10.00 to Angela Madle at 56 Windmill Street, Frindsbury, Rochester. Tel: (0634) 722661, please

**15 MAY.** White Hart, Orpington. 8pm sharp. Slide talk on recent BWB works on inland waterways by Ghulam Haider, Manager Technical Services, BWB. He was directly responsible for the reconstruction and engineering works of Blisworth Tunnel.

John Morgan will be running the third of his mid-summer cruises again this year. These are specifically for the local handicapped who would otherwise be most unlikely to get on the water. Starting point will be Maidstone and financial and other offers of help are earnestly solicited.

## **LONDON BRANCH—Report by Marion Waters**

*Chairman: Eric Garland, 39 Valence Road, Erith, Kent DA8 3JT. Telephone: 0322 342296.*

*Secretary: David Allison-Beer, 61 Winkley Court, East Coate Lane, South Harrow, Middlesex. Telephone: 01-864 3798*

**MEETINGS**—All meetings are held at 7.30pm in the Old Refectory, University College, Gower Street, London WC1. Entrance, including car park, in Gower Street—one way, North-South. Well stocked Bar.

**19 MARCH.** Branch AGM. Followed by Brentford 1986—A. Farrand Radley.

**23 APRIL.** Whittaker Tankers in the Aire and Calder; Lime Juice on the Grand Union; and, A Humberside Cruise—Keadby to Goole—Mike Herniman.

**21 MAY.** New Canal Developments in Europe—Dr. Roger Squires

### **BRANCH REPORT**

Please note the April social meeting will be on 23 April and not as previously published.

Presentation of funds raised by Canalway Cavalcade 1986 has been made. These were £200 to the Kent and East Sussex Canal Restoration Group, £100 to *Island Hope* the Isle of Dogs Youth Club barge, and £500 to the Surrey and Hants Canal Society to help get the Basingstoke Canal restored for its 1988 target.

**STAFF VACANCIES**—Admin/Typing assistance is urgently needed for both Canalway Cavalcade and the Planning and Navigation Committee, two volunteers or one energetic person. Further details, contact Eric Garland.

**CANALWAY CAVALCADE 1987**—returns to Little Venice on May Day bank holiday, 2-4 May, with a wider range of entertainments. At this rally everyone is assured that Real Ale is within easy reach, courtesy of the Bridgehouse. The pageant will take place on the Saturday afternoon; for the first time a trophy will be awarded to the Best Privately Owned Decorated Boat taking part, so start designing and come up with lots of colourful imaginative ideas, you might be on television. On Sunday evening there will be the Illuminated boats and the chance to win the trophy for the Best Privately Owned Illuminated Boat. The Teddy Bears Picnic will be on Monday, with a prize to the Best Dressed Bear, as well as other small prizes for various competitions. Boat entry forms available from: Ann Hancox, 95 Grosvenor Court, London Road, Morden, Surrey SM4 5HQ. Tel: 01-640 1446. Other enquiries, including trade, to Marion Waters, 88 Woodlands Avenue, Wanstead, London E11 3QY. Tel: (w) 01-626 8331 ext 30.

**EAST LONDON RALLY**—This year we are adding a second rally to our list of activities, unlike Canalway Cavalcade, it will be a campaigning rally which will have a different venue each year moving around the London Branches waterways. The campaigning aspect will be for the Country not just for the London area, so all Branches and Canal Societies will be welcome with the boats and stands. Further details will be published as soon as possible.

## **SOLENT AND ARUN BRANCH**—*Report by Alan White*

*Chairman: Alan White, Wheel House, Pottery Lane, Nutbourne, Chichester. Telephone: Bosham 573765*

*Secretary: Mrs Linda Peirce, 46 Hillcrest Drive, Ashington, Pulborough. Telephone: 0903-892254*

### **BRANCH MEETINGS**

**20 MARCH.** AGM. 7.30pm. Fernleigh Centre, North Street, Chichester.

**26 APRIL.** Coach Trip. A return visit to *SS Great Britain* and a chance to visit the new industrial museum at Bristol. We'll arrange pick up points when we know who is coming but the coach will pass through the main south coast towns. Full details from Ray Peirce.

**10 MAY.** Arun Sponsored Cruise. This will be our fifth attempt to sail from Pulborough to Guildford; in case the Wey and Arun Canal is still short of water in places, we have a contingency plan to go only as far as Pallingham. Get yourself a boat, a few sponsors and come with us to help find the Lost Route. Details from Ray Peirce.

**26 JULY.** Adur Sponsored Cruise. Nobody will sponsor us after last years escapades. However, provided you bring your own boat and steer clear of any craft owned by a Solent and Arun committee member, you should be able to avoid (a) going aground, (b) getting lost in the mud flats, (c) being swept out to sea. This is a cruise-in-company suitable for any trailer launched boat. A chance to reach the top of the navigation without the risk of being marooned in the wilds of Henfield. Details from Ray Peirce.

**Any old iron?** An important source of income to the Branch is our sales stall jumble section. We would like to hear from any one who wishes to donate any portable, saleable items; we can collect from more or less anywhere in West Sussex and the eastern half of South Hampshire.

We can't handle clothing but all most anything else. The photograph shows our stall, complete with kitchen sink, at the Parham Park Steam Rally last year; incidently, we will be attending again this year, 13 and 14 June, and would be pleased to see you if you drop in.



*Parham Park—Steam Rally July 1986. Photo—Gerry Skinner*

## **HERTFORDSHIRE BRANCH**—*Report by Michael Wright*

*Chairman: Barry Martin, 7 Northridge Way, Hemel Hempstead, Herts HP1 2AE*

*Secretary: Beryl Martin, Telephone: Hemel Hempstead 54031.*

**BRANCH MEETINGS**—held at the Hatfield Cricket Club, Ascots Lane, Welwyn Garden City (near the Queen Elizabeth II hospital) at 8pm. on the third Tuesday of each month, (except July and August).

**11 MARCH.** Wednesday. GUCS joint meeting at Camelot Rugby Club.

**17 MARCH.** Tuesday. Branch AGM, followed by, A journey from Napton to Bingley, with Ian Fletcher.

**7 APRIL.** Tuesday. Regional AGM, followed by, Trail Boats, with Ron Martin.

**21 APRIL.** Tuesday. Miss Francis Read, BWB London Area Leisure Officer, talking about the British Waterways Board.

**19 MAY.** Tuesday. Dr. Roger Squires—'The Droitwich Canal'.

**16 JUNE.** Tuesday. The Trinity Lighthouse Service.

**28 JUNE.** Sunday. Branch Outing.

**BRANCH REPORT**—As I write this report, the temperature outside is well below freezing, the sort of weather that used to bring the waterway traffic of Great Britain to a standstill. In fact it still does, what little there is left. This cold spell has been the worst for so long, the weather men tell us. However life continues, but I think when it comes to waterway activities, the weather sorts out the men from the boys. (If I am allowed to use such a phrase in this day and age.)

With amazing regularity it always seems to rain in Welwyn Garden City on the third Tuesday of each month, when we hold our monthly meeting, but the committee do appreciate your attendance, despite the sometimes inclement weather. It is a continuous process of trying to please all the people all the time, when organizing our monthly meeting, which is, as you all may well know, not possible. But a speaker, who must have given a great deal of pleasure with his talk of 'A working life on the Thames', was Bob Harris, who spoke at our October meeting. Although retired now, he has spent all his working life on the Thames, following in his fathers footsteps, and working his way up from an apprentice lighterman to a tugboat skipper. There cannot be many people that would take down their paintings from their living room wall to bring along to illustrate their talk. Bob Harris spent the evening explaining to us how the Pool of London operated and his experience of many years afloat, including his trip into one end of a dock with a boat, to find lorries at the other end of the dock tipping in rubble to fill it in.

In November, Dr David Hilling, a Herts member I believe, spoke on Inland Shipping. He gave a very clear picture of the various methods of transport used in Great Britain, stressing the many advantages of carrying a variety of goods by water. Dr Hilling also drew comparisons with Europe, emphasizing how the Europeans make tremendous use of their waterways.

On the theme of waterways transport, John Morin brought an archive film along to our Christmas meeting, headed 'Commercial carrying on the Grand Union Canal', preceded by a short film explaining in basic terms what 'Locks' were all about, (not the type with keyholes), and how they operated. It all 'locked' so simple. The film of the carrying on the GUC was made in the early 1950s and recorded a journey from Brentford to Birmingham, with a full explanation of the why's and wherefore's. Definitely worth a second look if you ever get another chance. Prior to the Ploughmans Supper and films, a capacity crowd of members were given the opportunity to show their knowledge of the inland waterway system, by indentifying various location on postcards. However the views were upto fifty years ago and 'fings ain't wot they used to be'. (Thanks to the Chairman for a peek into his postcard collection.)

Our AGM is being held on Tuesday 17 March, when we will try to keep the formalities to a minimum, but if I suggest you come to air your views, the Chairman would refer you to our slide evening held on 20 January. In an attempt to keep Herts members well informed on our activities, the committee have agreed that rather than give the members an 'ear bending' before the speaker is 'set loose' at our monthly meetings, a small sheet of notices is distributed as a 'take away' item. (For the members kitchen notice board.) Any special items for inclusion should be made known to the Secretary seven days prior to the meeting.

The joint meeting (no not that 'joint') to be held with GUCS will take place on Wednesday 11 March at the Camelot Rugby Club, corner of Chaulden Lane and Old Fishery Road,

Boxmoor, Hemel Hempstead at 8pm, when Mr P. W. Saunders will be talking on 'Horsedrawn Boats'. This new venue has a comfortable well heated room, with bar, and large car park.

Now that you may be pondering on the warmer weather and holidays, could you cast your mind forward and make a mental note to take a colour transparency film to record some waterway scenes for next years slide evening. Whilst photographs are the current trend, we would like to share your waterway experiences with you later this year, whether you holiday in spring, summer or autumn.

**WENDOVER ARM**—As mentioned in the last edition of *Windlass*, the Wendover Arm Group are to publish an Amenity Report and by the time you read this copy, the report should be available. For those members who are interested the report can be obtained from Ian Packe, 2 The Driveway, Anchor Lane, Boxmoor, Hemel Hempstead, Herts HP1 1NT. The cost is £1.50 per copy, including post and packing.

**FUTURE EVENTS**—The Regional Annual General Meeting is to be held at our usual venue, Hatfield Cricket Club, Ascots Land, Welwyn Garden City, on Tuesday 7 April at 8pm, when all Regional members will be welcomed. This meeting will be followed by a talk given by Ron Martin on Trail Boats. If you are not sure what they are, then here is a good reason to come along and find out.

The Branch Outing is planned for Sunday 28 June, when we will be visiting the Black Country Museum and the Dudley Tunnel. The cost will be £8 for adults and £7 for children and includes the coach journey and entrance fees to both sites. Contact Phil Orton for bookings, telephone (0923) 670267, but book early to avoid disappointment.

There is to be a gathering of boats in Cassiobury Park, Watford, on the Grand Union in September, as part of a celebration to mark the 190th Anniversary of the opening of the Grand Junction Canal, 'Mid September 1797', Rickmansworth to Kings Langley. Watford Borough Council are to re-arrange their Fun-Day to coincide with these celebrations. Further details to be given in the usual waterway magazines.

## **CHELMSFORD BRANCH**—*Report by John Gale*

*Chairman: Mrs Molly Beard, 241 Benfleet Road, Benfleet, Essex Telephone: 554492*

*Secretary: Ken Wood, 39 Linley Crescent, Romford, Essex. Telephone: 65504.*

### **BRANCH MEETINGS**

All meetings are held in the downstairs room at AEUW House, Primrose Hill, Chelmsford, at 7.45 for 8pm (sharp).

**12 MARCH.** Branch AGM, followed by members' slides.

**9 APRIL.** Canal Architecture—a welcome return by John Boyes.

**14 MAY.** The Basingstoke—Stuart Chrystall talks about the canal and progress towards the reopening 'Target '88'.

### **BRANCH REPORT**

**SPRINGFIELD BASIN**—We have to report some movement, but, regretably, not in the right direction. Chelmsford Borough Council have applied for a Compulsory Purchase Order for part of the Gas Works site—to build yet another car park! We have nothing against car parks themselves, they are fairly necessary, but as so much of the existing river frontage is already devoted to them, the last thing we want is another one bordering on the basin. We have written to the Department of the Environment to formally object, and await results—which could be a Public Enquiry.

**'COME BOATING EXHIBITION'**—As an experiment, at the end of November, we staged a 'Come Boating Exhibition' in Chelmsford. This was both a great success and a little disappointing! A great success because it was very well staged—and *made a profit*. Special thanks are due to Roy and Sylvia Cox (who masterminded it), Roy Chandler who produced some superb display panels, and to the Bates family for their magnificent display of plaques, canalia, and painted ware. It was disappointing because the general public came in dozens instead of hundreds. We learnt many lessons, and hope to repeat it in a more central venue—possibly in early 1988, rather than late 1987.

**IWALK 7 JUNE**—On 7 June (no apology for repeating the date!)—we will be holding our bi-annual sponsored walk from Chelmsford to Heybridge Basin, a distance of fourteen miles. For those of you who speak ‘metric’ that is approximately 22 kilometres. The sponsorship brochure will be posted to all Chelmsford Branch members during the first half of April. If you don’t receive one, or if you would like some more for friends, or if you are not a member of the Branch but would like to walk anyway, please contact John Gale at the address below.

We hope to make an all time record amount of money. Ten per cent will be retained by the Branch, and put to our Springfield Basin campaign. The remaining ninety per cent will go to the Waterway Recovery Group. In particular we have committed ourselves to purchasing a used four wheel drive dumper to replace one of WRG’s aging two wheel drive ones.



**SPONSORED MOW**—We would ask those of you who are unable to join the walk to (financially) support our sponsored mowers. In past sponsored walks those brave enough to walk in shorts have bitterly regretted it whilst forcing their way through chest high stinging nettles, etc.

This year instead of our normal ‘Marshalls Walk’ a weekend or two earlier, we propose to take a motorised sythe along the route to cut a pathway through the Amazonian style vegetation. We hope that this will get us some publicity, make walking easier (not only for ourselves, but for everybody who uses the towpath) and, most importantly, raise additional funds for our IWALK. If you are not going to walk, please

sponsor the ‘Mowers’ or send a donation (cheques should be made out to ‘Chelmsford Branch of IWA’) to John Gale, 12 Wakefield Avenue, Billericay, Essex CM12 9DN.

*Walkers gathered prior to the start of the Chelmsford IWALK 1986.*

*Blind walker, Ray Johnson is centre (with white band)*

*Photo—Roy Squire*



**OXFORD AND SOUTH BUCKS BRANCH**—*Report by Ray Powell*

*Chairman: Bert Pettitt, 2 Rowan Drive, Wootton Bassett, Wiltshire. Telephone: Swindon 853100.*

*Secretary: Mrs Pam Pugh, 10 Vanner Road, Whitney, Oxon. Telephone: Whitney 71138*

**BRANCH MEETINGS**

**Oxford Section:** Meetings at The Red Lion, Kidlington, Oxford. 8pm.

**10 MARCH.** Annual General Meeting

**7 APRIL.** The Basingstoke Canal—Robin Higgs

**12 MAY.** Film Night.

**Banbury Section:** Meetings at the 18-30 Club, Spiceball, Banbury. 8pm.

**31 MARCH.** To be arranged.

**28 APRIL.** To be arranged.

**Bucks Section:** Meetings: Bailey Room, Crown Hotel, Amersham. 8pm.

**19 MARCH.** Caledonian Canal—Andrew Dawson.

**16 APRIL.** Birds Eye View of the Thames—Christopher Stanley.

**BRANCH REPORT**—There has been a good response to our winter programme with an encouraging number of members attending meetings—keep up your support and encourage your hard working committee members.

The cheese and wine evening in December was also well attended—over fifty people came along to a very enjoyable function at the usual monthly venue in Oxford, The Red Lion at Kidlington.

The Branch are again hoping to raise funds by having a stall at the Beaulieu Boat Jumble—anyone who is able to contribute boat bits and pieces or wishes to sell larger items on a commission basis is requested to contact a committee member.

The Branch is also supporting the Barn Dance organised by the Thrupp Cruising Club which is to be held in the Barn at Thrupp on the 27 June, further details from Pam Pugh.

We would also like to mention the final two working parties this winter, to take place on 8 March and 5 April on the Stratford Canal. Details from Maureen Finch, telephone Cholsey 652028.

One final plea—Don't forget the forthcoming AGM. Anyone who feels able to serve on the various committees either at Oxford, Amersham or Banbury, please contact our Secretary, Pam Pugh, who will be pleased to give any further information or encouragement needed.

The programme details above, you can be assured, are the definitive version—apologies for the previous confusion brought about by problems with dates and venues at both Oxford and Amersham, which were quite outside our control. The Secretary would also be interested to learn whether there are strong preferences for meetings on Tuesdays or Wednesdays.

## **GUILDFORD AND READING BRANCH**—*Report by Colin Ward*

*Chairman: Brian Percy, 21 New Road, Marlow Bottom, Bucks. Telephone: Marlow 4575*

*Secretary: Neil Morley, 10 Gosden Road, Westend, Woking. Telephone: (04867) 4759*

### **BRANCH MEETINGS**

**16 MARCH.** Branch AGM and film show. B.T. Social Club, Leapale Lane, Guildford

**13 APRIL.** Canals of Ireland—Teddy Edwards. Kings Arms, High Street, Godalming. All meeting timed for 8pm start.

**BASINGSTOKE SECTION MEETINGS**—Mrs W. Brenchley, Basingstoke (0256) 24692.

**17 MARCH.** Water Birds—Mr. Knight, RSPB.

**21 APRIL.** Section AGM. Followed by a film.

All meetings timed to start at 7.45pm, at the White Hart, London Road, Basingstoke.

### **BRANCH EVENTS**

**13-14 JUNE. National Steam and Small Boat Festival**, Frimley Green, Basingstoke Canal. Details *Windlass 179*, or phone Tony Davis, Weybridge (0932) 44261.

**11 -12 JULY. Water-Wey Fayre**, Guildford. Our established event continues this year. See photo feature *Windlass 179*, where nb *Alton* appears to be delivering beer and a ready-pitched tent! Details phone Dick Harper-White, Weybridge (0932) 42074.

**RIVER WEY NEWS**—The Guildford and Reading Branch has an excellent relationship with the National Trust in the latter's capacity as navigation authority for the River Wey, and that is due in no small measure to the efforts of our member Ulick Palmer. For several years past Ulick has served on the Branch committee as River Wey representative but a recent house move away from the area has forced him to relinquish the post. We are very sorry to lose him. All River Wey users, whether boat or not, and even whether IWA members or not, have a debt of gratitude to Ulick for his vigilance and concern about the river's navigation works and facilities.

Ulick has rounded off his time as River Wey representative by compiling a report on the condition of the River Wey and Godalming Navigations. The report updates his similar document of three years ago and describes some heartening improvements which have been achieved in that time. Readers wishing to have their own copy may obtain one by sending a large SAE to Pat Perry-Barton, 'Segren', Grove Road, Beacon Hill, Hindhead, Surrey GU26 6PH. Pat has taken over the job of River Wey representative and will be pleased to receive member's comments and suggestions concerning navigation and facilities on the river.

Coincident with this IWA change has been a change at the National Trust. To the former navigation manager Bruce Ratcliffe we extend our best wishes for a happy retirement, and at the same time we welcome the new manager Bob Nicholls.

**THAMES  
MOORING  
WANTED  
for 44' narrowboat  
SIMCO 4**

Regular Summer Mooring  
May to September  
each year


Upstream of Marlow

Would consider purchase

**R. F. SIMS  
129 MEADOW WALK, EWELL  
EPSOM, SURREY KT19 0BP**

*Please mention Windlass when replying to advertisers*

**THE GREEN LANES CENTRE**



**WALKING  
HOLIDAYS**

Special tow path routes in Devon  
for IWA members

Enquiries to: **The Green Lanes Centre**  
**FREEPOST, Dartington, Totnes**  
**South Devon TQ9 6BR**

*Letter to the Editor*

214 Broomfield Road  
Chelmsford Essex CM1 4DY

Dear Sir,  
**California Swop**

Bev and Dollie Morant who live near Los Angeles are IWA members and have previously spent holidays on British Waterways.

They would like to exchange the use of their house and mobile home sometime this summer with a couple who are willing to let them use their boat.

We stayed with them in California a couple of years ago and they've written to us asking if we can put a boat owner in touch with them.

Yours sincerely, Betty Adams  
(ex Chairman, Chelmsford Branch IWA)

## **Surrey and Hampshire Canal Society**

### **Basingstoke Canal—Report by Peter Cooper**

The Surrey and Hampshire Canal Society (SHCS) hope to complete all their restoration work on the locks on the Basingstoke Canal within the next two years, and the end of 1986 found work in progress on various fronts on the canal.

Several locks were, at this stage, nearing completion. On the St Johns Flight, near Woking, Lock 7 had only a few small jobs still to be done; Lock 8, next door, still had about a third of a chamber wall to be completed, but looks to be on course for completion in Spring 1987. Completion of these two locks will mean completion of the whole of the St Johns Flight, a major scene of volunteer effort for the last five years. A mile or so away, on the Brookwood Flight, Lock 12 was virtually complete, following the efforts of several groups of full time workers—a contractor, a NACRO team, and of course the SHCC's own team; completion of this lock will likewise mean completion of the Brookwood Flight, and will mean that all lock restoration work will then be concentrated on the Woodham Flight.

Even on the Woodham Flight, there is completion in the air. Lock 1 is another lock that has only a few more jobs left to be done, and Lock 4 is coming on well. Locks 2 and 3 remain the main tasks for the lock restoring volunteers on this canal. The other big long running volunteer job is the dredging of the Hampshire section; at the turn of the year the dredger had just passed through the swing bridge between Poulter's Bridge and Malthouse Bridge, and was continuing towards Fleet.

So a lot is happening on the Basingstoke Canal, and needs to continue to happen for the next two years. Readers of *Windlass* are, of course, most welcome to come along and help us finish the job.

# Chichester Canal Society

## Progress report by Alan White

On a bitterly cold day before Christmas, a large mobile crane settled itself in the road alongside the canal basin in Chichester. There were not many people around, but of the dozen or so there, one at least should have experienced a warm glow of satisfaction. John Cooper, Chairman of the CCS was witnessing the delivery of a tug and two mud barges purchased by the Society for the dredging programme of the Chichester Arm of the Portsmouth and Arundel Canal.

After the promise by West Sussex CC of grant aid, the Society faced a series of frustrating delays before being able to proceed with their plans; but a veritable spending spree in the last few months has bought the tug and barges, a Hymac with grab and bucket, a purpose built pontoon with adjustable legs, two 2-ton dump trucks, a Dory runabout and a caravan to act as site office and shelter for the MSC team.

The basin and the adjacent section, showing open water in winter, are clogged by silt and the



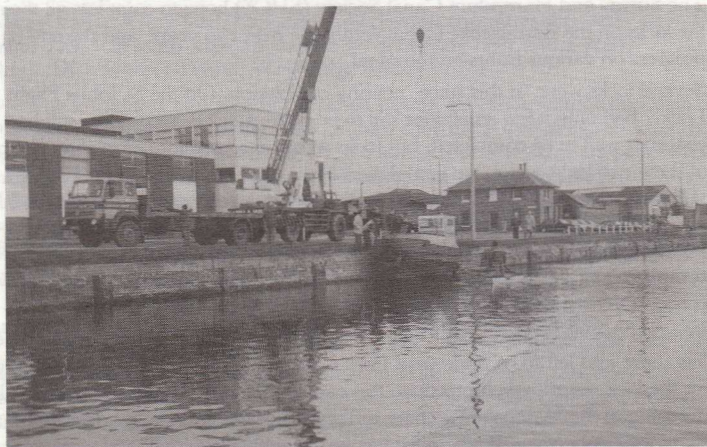
Photos—Gerry Skinner

Arrival of tug Bantam VI at Chichester Basin

skins of weed it supports in summer. This has reduced the appeal of the Society's earlier enterprise of having skiffs available for hire. Chemical control of weed has been used with considerable success in the Hunston-Donington section. The angling potential of the canal is being developed and gross revenue amounted to £2,500 last year. While waiting for the means to start dredging the MSC team have improved the towing path and constructed a landing stage at Hunston.

It is the delivery of the dredging plant however that signals a major stepping up of restoration activity on the canal. The removal of the six to eight feet of silt in the basin will considerably enhance its appearance and safety.

The main fund raising event, the annual Barrel Race, yielded over £1000 last year. This year the races will be held on 11 July at 2pm. Teams consist of four persons; all details are available from John Cooper, telephone Chichester 671051.



Launching Bantam VI in Chichester Basin